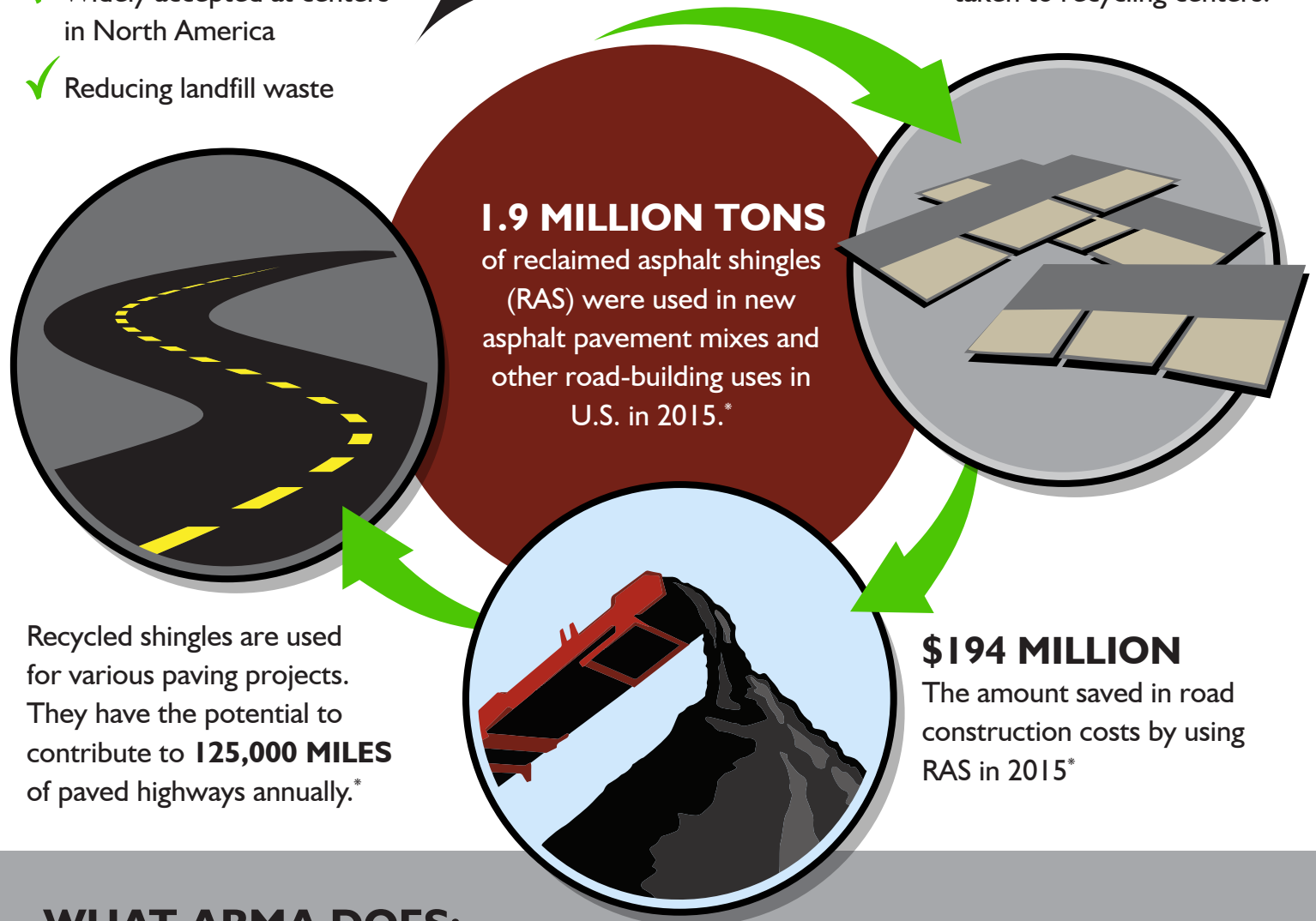


SHINGLE RECYCLING IS:

- ✓ Cost effective
- ✓ Widely accepted at centers in North America
- ✓ Reducing landfill waste



A SECOND LIFE
Shingle tear-offs can be taken to recycling centers.



WHAT ARMA DOES:

- Members participate and support the advancement of shingle recycling by researching and reporting on other applications of recycled shingle content.
- Work with National Asphalt Paving Association (NAPA) and Asphalt Institute to expand use of RAS in paving.